

Specifications and Features

Dimensions

8H x 13.5W x 13D inches

Weight

6.4 kg (14 lb.)

Power Requirements

85 to 264 V ac, 50/60 Hz, 1.5 A
Universal Input

Sample Test Time*

5 minutes standard

Sample Volume

11.0 ml (0.38 oz)

Sample Stabilization Time

30 seconds

Chocolate Temper Unit (CTU)

Repeatability

±1.0 CTU

Cooler Temperature Stability

±0.06°C (±0.1°F)

Probe Heater Temperature Accuracy

±0.6°C (±1.0°F)

Temperature Measurement Sensitivity

±0.006°C (±0.010°F)

Temperature Measurement Range†

15° to 29°C (58° to 86°F) standard

Temper Curve Temperature Scale†

15° to 29°C (58° to 86°F) standard

Ambient Operating Temperature Range

10° to 38°C (50°F to 100°F)

Self-Test

Automatic self-test on power-up

Display

LCD, 2 lines x 24 characters

Operator Prompts

Display provides full step-by-step instructions

Test Results

Display provides CTU and slope values

Sample Cups

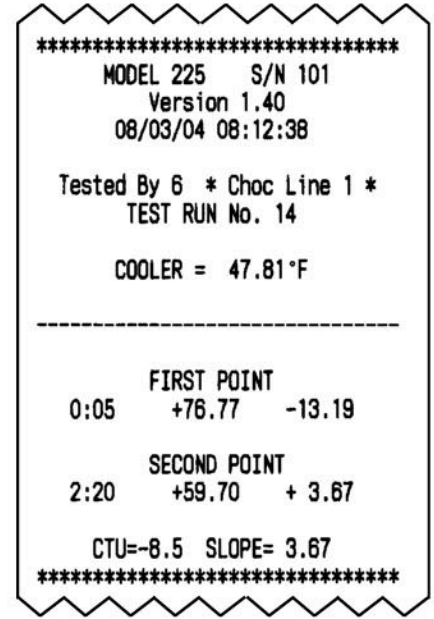
Disposable plastic cups ensure constant sample size and cleanliness; built-in ejector allows easy removal of sample cup after test.

Operation Manual

Supplied on CD

Standard Internal Printer

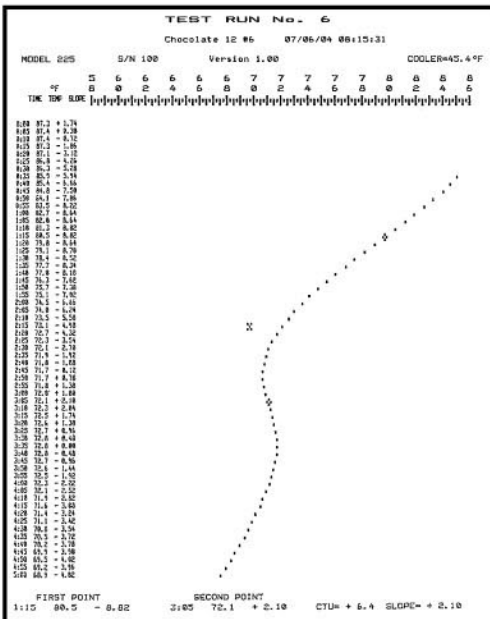
Printout shown with time and date option



Options

Print-Plot

Print test data and plot temper curves at a remote printer



Typical Print-Plot Printout

Time and Date

Marks the time and date of test of internal and external printout.

*Adjustable Sample Test Time

Switch selectable:

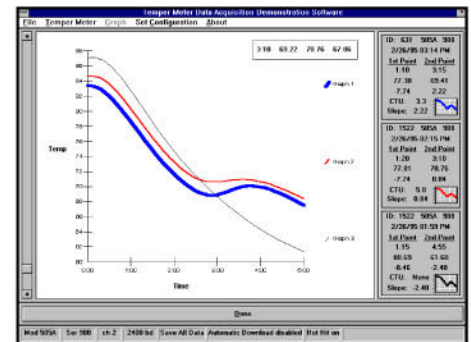
3, 3.5, 4, 4.5, 9.5, 9:55

†User Programmable Temperature Range

Between 15° to 46°C (14° band) and 58° to 116°F (28° band)

Data Management Package

TMDAS® (Temper Meter Data Acquisition Software) is a Windows™-based program that allows users to transfer test runs to a computer for further use and analysis. The files created by TMDAS® can be converted into many popular spreadsheet and database formats.



Sample Data Management Screen